

# **BUSINESS PLAN**

REV. 1.0b

William Alek  
**INTALEK, INC.**

3506-43rd. Place  
Highland, IN  
46322

CONTACT INFO:  
PHONE: 219.924.2742  
EMAIL: [alekws@intalek.com](mailto:alekws@intalek.com)



# **COMPANY OVERVIEW AND DISCOVERY**

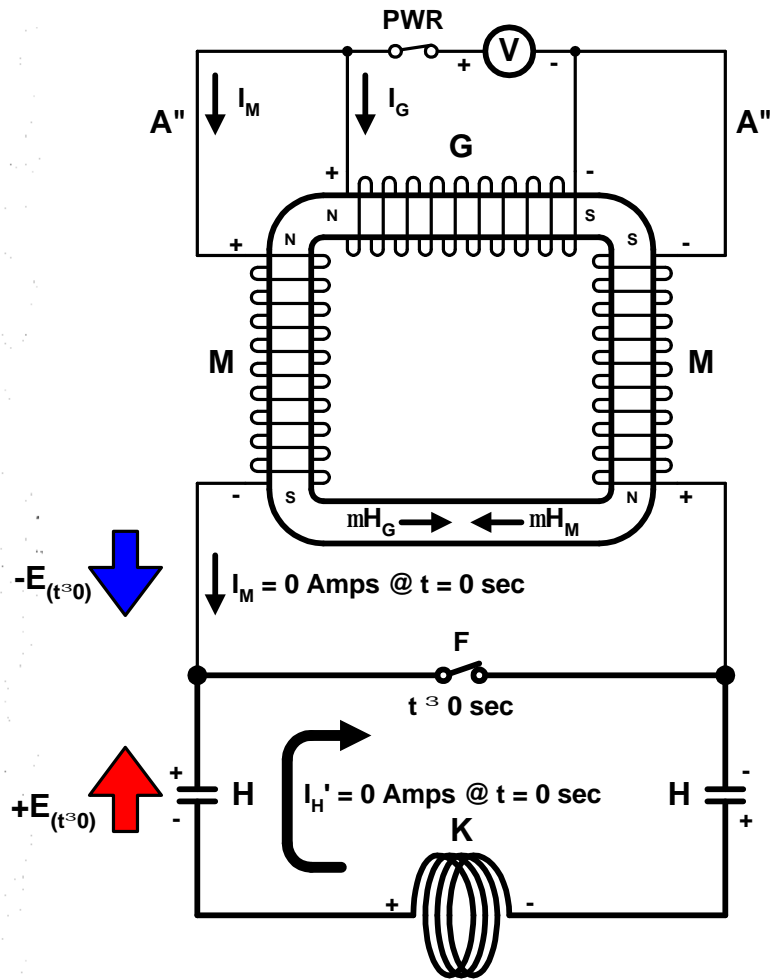
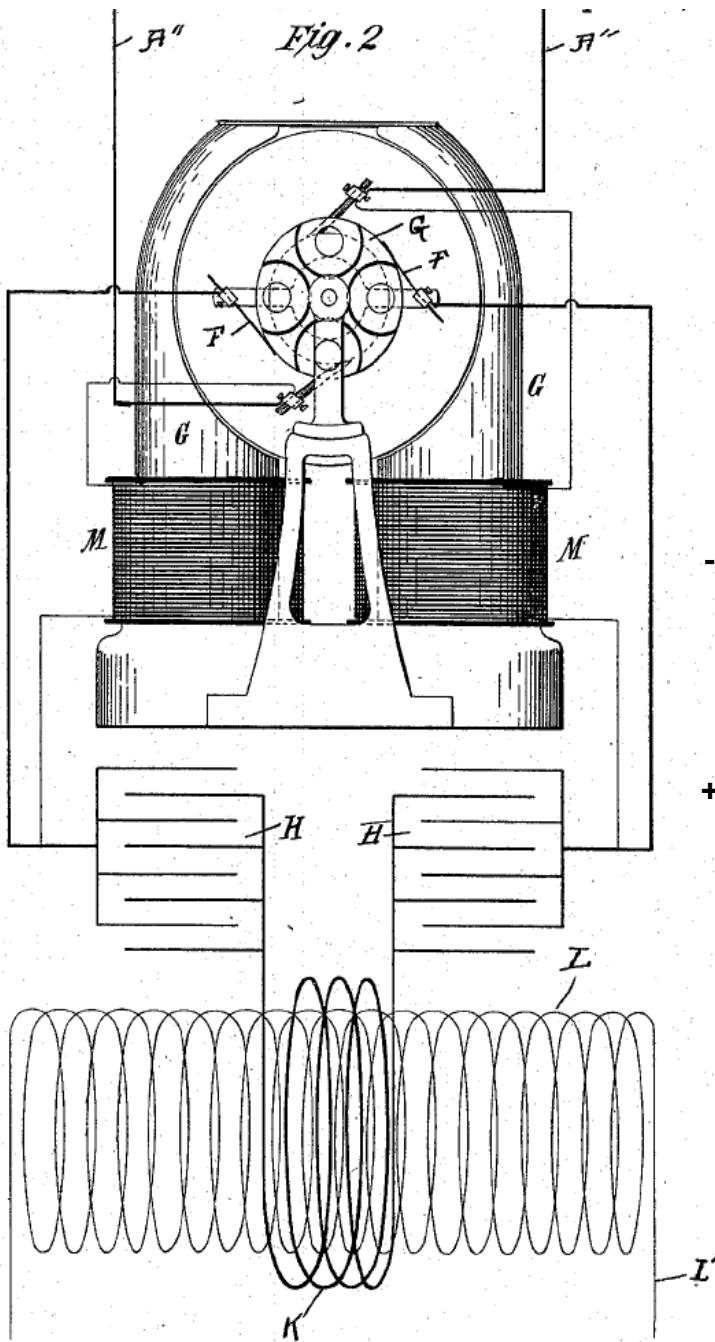
INTALEK, INC. is developing a unique and novel approach for improving the efficiency of current and next generation electrical energy or power generation systems.

INTALEK, INC. has discovered that an impulse of NEGATIVE ENERGY is released back to the source (dipole) supply from a set of mutually coupled primary/secondary coils configured as an ordinary transformer. The "negative" mutual coupling component is established through ferromagnetic media. The secondary coil MUST have reverse residual magnetization and sufficient inductance in order for the phenomena to occur.

INTALEK, INC. has found a way to build practical solid-state electronic products based on this discovery.

INTALEK, INC. will focus on continuing the research and development of this discovery, and licensing the discovery by developing products that use the latest manufacturing techniques.

# ANALYSIS OF Nikola Tesla's US Patent 568,176



**NOTE:** At the moment of switch F closure, or  $t = 0$  sec,  $I_M = 0$  Amps, impulse energy  $-E$  occurs, and impulse current  $I_H$  flows.

With a properly balanced system, impulse energy  $-E$  will seek a higher resistance due to convergence, therefore, it will act to charge capacitors H with "time-reversed" current. Both "time-reversed" and "time-forward" impulse current  $I_H$  CANCEL. This results in PURE VOLTAGE across coil K with  $I_H' = 0$  Amps!

The phenomena was first observed by Nikola Tesla back in the 1880's. Tesla then devised a series of machines patented in the 1890's that greatly amplify this phenomena, which he later called RADIANT ENERGY.

# MORE ABOUT THE DISCOVERY

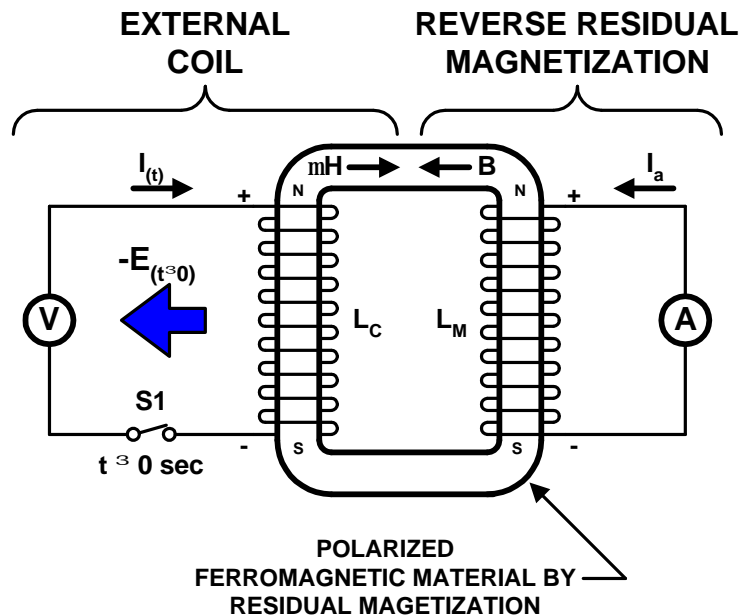


Figure 1.

NEGATIVE ENERGY is observed as a transformation of ambient thermal environmental energy to "time-reversed" electrical energy. This form of electrical energy is theorized as an electromagnetic flow of "time-reversed" displacement current that is "converged" onto electrons. This results in a "backward" or "reverse" drift flow of electrons, or what is known as "cold current".

Both common current (hot current) and cold current can flow down a copper conductor simultaneously. However, if cold current dominates the flow through a resistor for example, a "cooling" effect is observed in that resistor. The cooling effect is regarded as "negentropic" and theorized as "self-ordering" of the quantum active vacuum, which has been proven to occur for a short period of time.

# DEVELOPING PRODUCTS BASED ON THE DISCOVERY

The Coefficient Of Performance, or COP, is a unit-less number, and is calculated as a ratio of the energy out divided by the energy in.

So, for products that use conventional coil-based devices, COP will ALWAYS be less than 1.00:

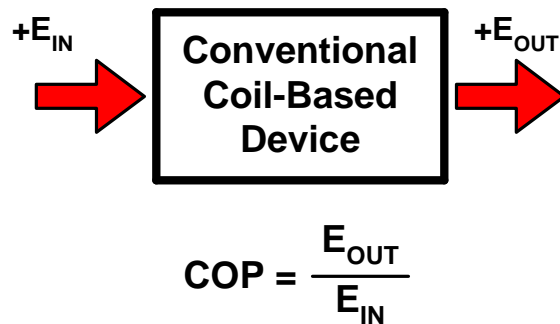


Figure 2.

However, for devices that use the discovery, COP can be greater than 1.00:

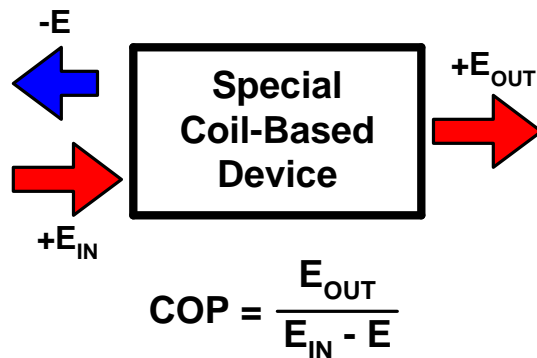


Figure 3.

# **LICENSING PRODUCTS AND TECHNOLOGY**

Companies may manufacture the products developed by INTALEK, INC. that utilize this discovery by purchasing a licensing agreement.

The licensing agreement will allow the licensee, or company to **ONLY** manufacture the products developed by INTALEK, INC. This serves to certify that the product will work according to specifications established by INTALEK, INC. A time limit and the level of manufacturing technology shall be part of the agreement. If the licensee attempts to re-engineer, reverse engineer, or release proprietary technical information relating to this agreement to a third party, thereby wishing to do harm to INTALEK, INC., the licensee shall be in violation of the agreement.

## **COMPETITIVE ADVANTAGE**

There are presently NO companies that are competing with products developed by INTALEK, INC. A competing company MUST first have the technical expertise to understand such technology based on the discovery, then secondly, engineer the discovery into a practical product. As an example, the CEO of INTALEK, INC. already has four man-years invested and related to the discovery.

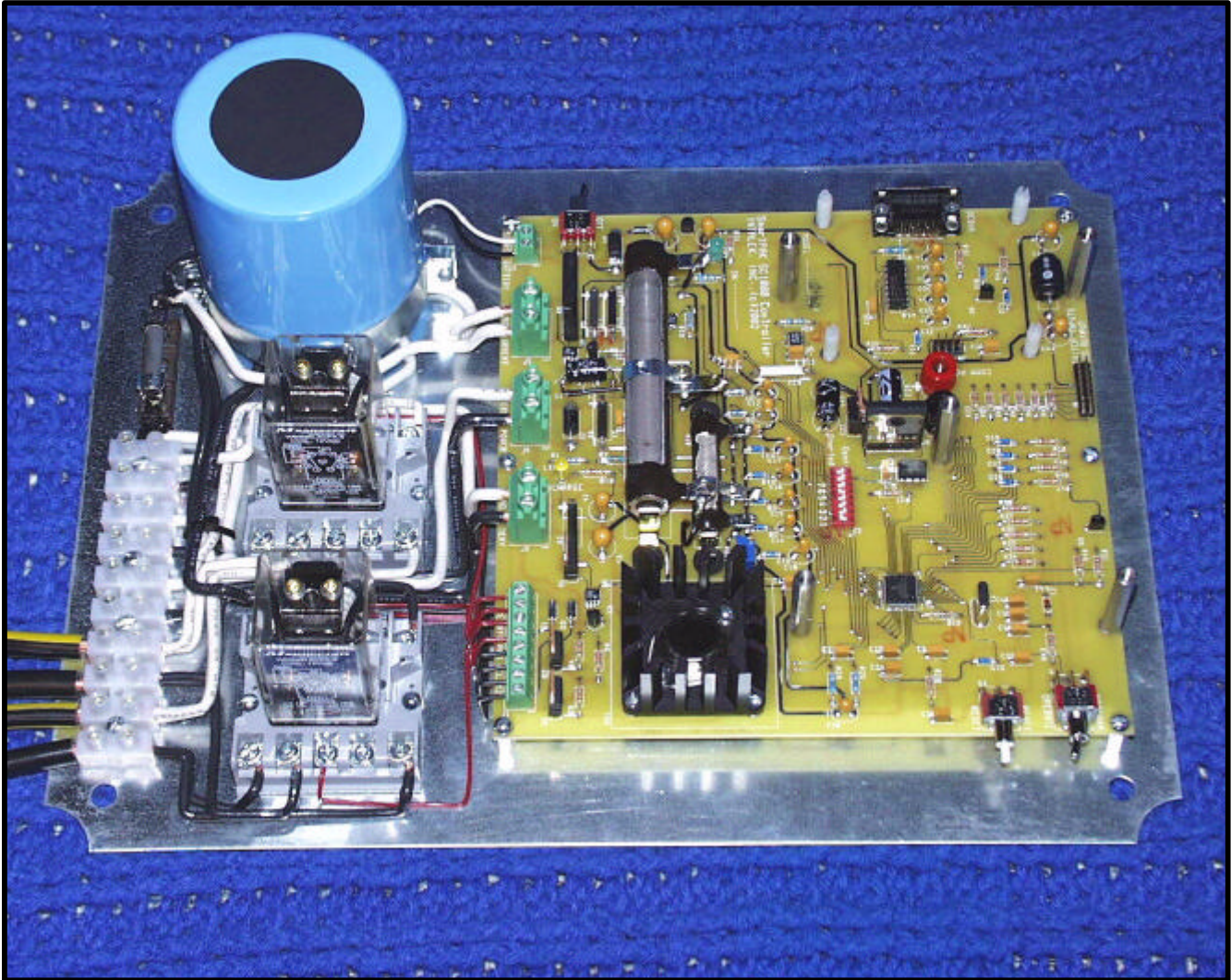
## **APPLYING THE DISCOVERY**

Commercial and military companies can license the technology based on the discovery. It can be applied to new and existing power supply equipment. Because the technology is "solid-state", it requires little or NO maintenance.

## **RESEARCH AND DEVELOPMENT**

INTALEK, INC. will focus investment capital resources towards continued research and development of the discovery. Resources will also be required for reducing the discovery to practice through a development process, This will require the latest manufacturing techniques.

# EXISTING R&D PLATFORM: THE SmartPAK™ CONTROLLER



## DESCRIPTION

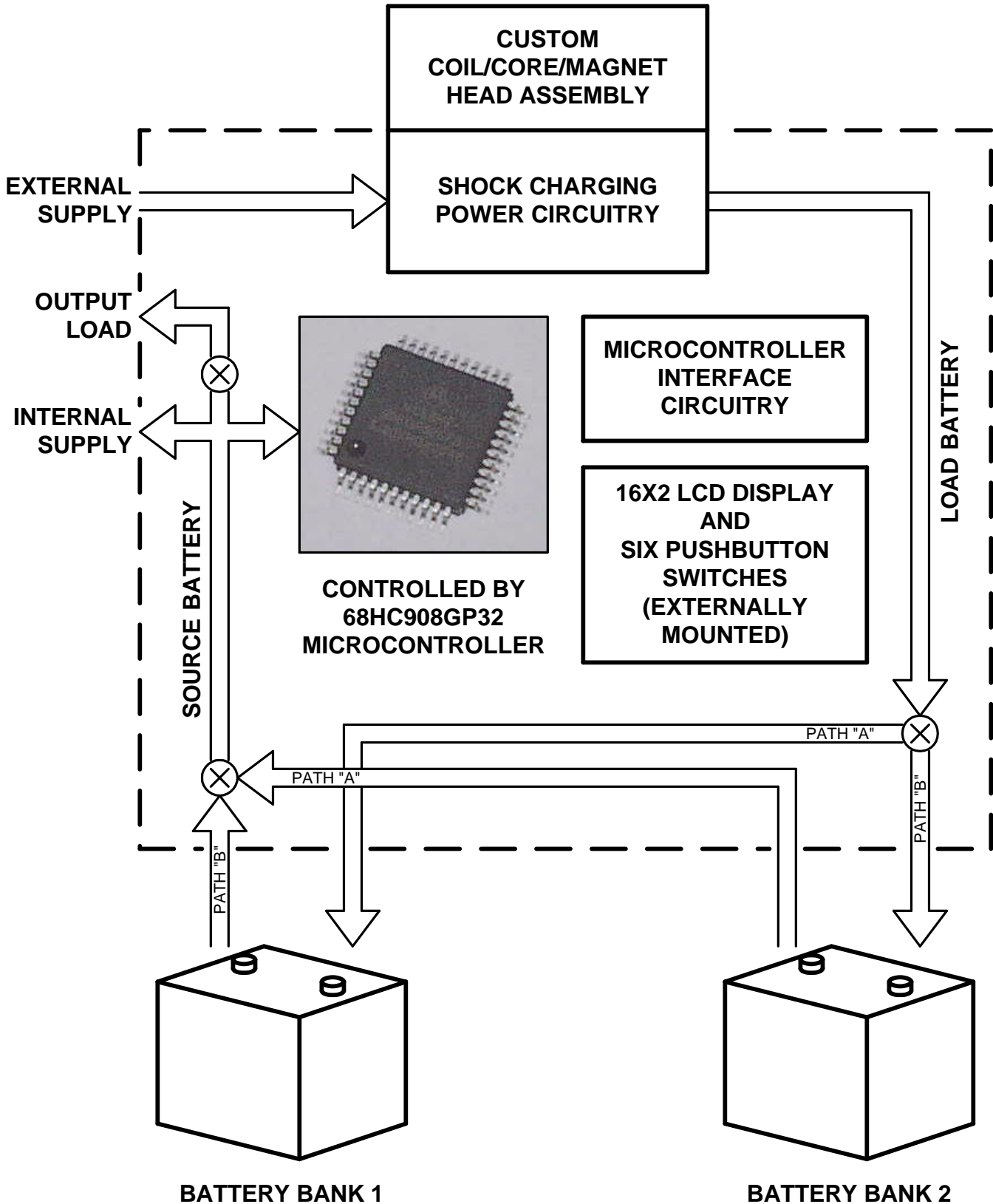
SmartPAK™ is the world's first all solid-state FREE ENERGY or OVER-UNITY power management system that transforms ambient thermal environmental energy to excess electrical energy. It provides a "standard" platform for experimenters, researchers, and developers to do energy-related practical applications, experiments, and perform exploration of the OVER-UNITY phenomena.

The theory of operation is based on the difference of energy between magnetization/de-magnetization cycles of ferromagnetic materials utilizing a coil/core or coil/core/magnet Head assembly. It has been discovered that EXCESS energy is released during the de-magnetization portion of the cycle using a suitable core assembly. The SmartPAK™ system is specially designed to measure, collect, and store this excess energy for later use.

The SmartPAK™ system is controlled by a Motorola 68HC908GP32 microcontroller programmed to measure input/output voltages and currents, calculate COP, and contains software algorithms for a complete "turn-key" power management system. The system features a "standard" user interface, which allows the user to design their own custom coil/core/magnet "head assemblies", and immediately test and display in real-time its' performance.

---

# FUNCTIONAL BLOCK DIAGRAM OF THE SmartPAK™ CONTROLLER



## **MARKET OPPORTUNITY**

INTALEK, INC. is currently focused on research and development of the discovery for the industrial marketplace. The marketplace using the discovery can be applied to virtually any product that uses a battery or conventional electric power source. An initial marketplace entry point could be with the transportation industry. This includes electric bicycle manufacturers (see next page), golf cart manufacturers, forklift manufacturers, and wheelchair manufacturers. The primary intent is to "extend" the maximum range of these machines.

With continued research and development, the second marketplace will be commercial and residential applications. Integrating this technology into the business and residence would be the next logical step.

The third marketplace are consumer oriented applications. Integrating this technology into appliances such as notebook computers, and various handheld devices such as cell phones and toys would follow as the next step.



The photo above shows an electric bicycle called the "eBike", its been modified and equiped with SmartPAK Technology. The photo below shows the eBike being fitted with the SmartPAK controller.



# ADVERTISING INTALEK RESEARCH AND PRODUCTS

**SmartPAK Technology™**  
Invention by William Alek

the world's first commercial all solid-state system that provides a "standard" platform for experimenters, researchers, and developers to do energy-related practical applications, experiments, and perform exploration of highly efficient alternate energy system

The theory of operation is based on the amount of energy that is required to magnetize and de-magnetize ferromagnetic materials utilizing a core/coil/magnet assembly. It has been discovered that it takes MORE energy to magnetize a suitable core assembly than to de-magnetize it. The SmartPAK system is designed to measure and collect the difference, and store the excess energy for later use.

The SmartPAK device is controlled by a 68HC908QF32 microcontroller programmed to measure input/output voltages and currents, calculate COP and contains software algorithms for a complete "turn-key" power management system. The device features a "standard" user interface, which allows the user to design their own custom core/coil/magnet "head assemblies", and immediately test and display in real-time its performance.

**William Alek**  
President and CEO of INTALEK, INC

3509-43rd. Place  
Highland, Indiana 46322-3129  
e-mail: walek@intalek.com

Correspondence Address: P.O.Box 37,  
St. Petersburg, 192004, Russia  
Phone: 7-812-383-6964  
mailto:alek@intalek.com, www.intalek.com

**New Energy Technologies**

Published by Research Institute of Space Systems, St. Petersburg, Russia  
Research on advanced space propulsion methods and new energy systems

**History of invention:  
Pollakov's vortex drive**

Patented by Research Institute of Space Systems named by Kurnichev, Russia

**Also in this issue:**

- \* New gravodynamic paradox
- \* Experiments on weight reduction
- \* New possibilities of vortex energetics
- \* Experiments on homopolar motor
- \* Physical relationships of time

INTALEK's SmartPAK controller was recently featured in New Energy Technologies magazine. This magazine is published in St. Petersburg, Russia. Alex Frolov is the Chief Editor.

# **MANAGEMENT AND STAFFING REQUIREMENTS**

INTALEK, INC. is headed by William Alek. William has more than 22 years of experience as an embedded computer hardware and software engineering consultant. He has provided consultation in these areas for companies such as Motorola, Honeywell, General Electric, Bendix, Rockwell International, Mack Trucks, Cummins Diesel, etc.

He is a 1979 graduate of Illinois Institute of Technology, Chicago, Illinois, with a B.S.E.E. degree.

He is also President and CEO of INTALEK, INC., a small privately held corporation. It was founded in July 1983 by William and is an Indiana-based corporation.

Staffing requirements such as temporary technical help including machining of special parts, electronic assembly work, and special manufacturing requirements will be required from time-to-time on a consulting basis.

Also, temporary help including office assistance, legal, financial and accounting, and marketing expertise will be required from time-to-time on a consulting basis.

# **IMPLEMENTATION PLAN**

INTALEK, INC. will begin entertaining requests for investment immediately. The target funding requirement will be used for startup costs and funding the first three years of operating costs. Beyond this, the company shall be self-sustaining.

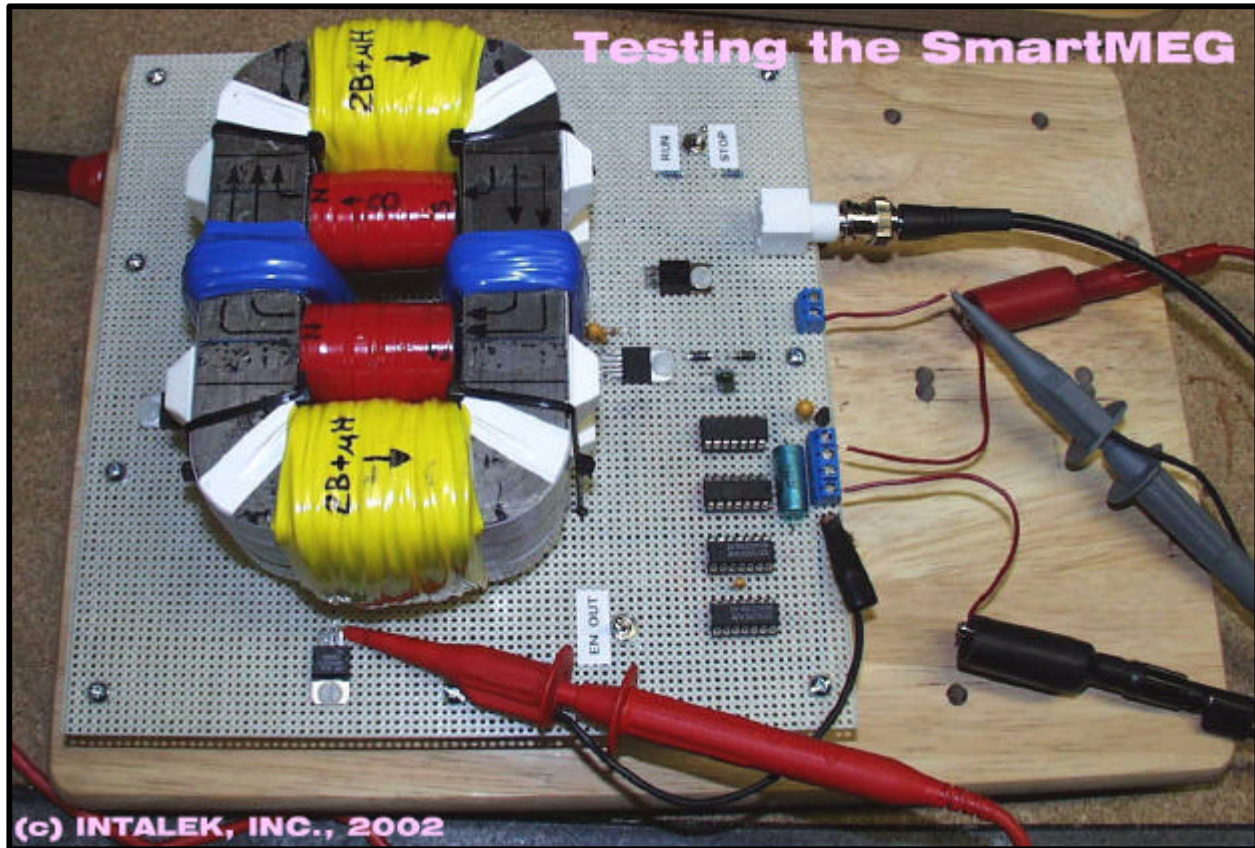
Startup costs will be used for equipment, materials, kickoff events, a website, legal requirements, and a building lease. The equipment required will include "lab-grade" test equipment and instrumentation, and the latest computing platforms and simulation software. The materials will be used to build devices and systems that are to be tested. The kickoff events and website, which are oriented towards marketing, will inform and educate the potential customer base about products that are under development. Legal requirements such as patent protection relating to the discovery and products developed shall be sought.

Once the initial startup is successfully completed, standard company operation can begin. Revenue of the company shall be based upon license agreements with equipment manufacturers and producing prototypes, demonstration units, and short production runs by light manufacturing. The potential customer base shall be the energy or power supply industry, commercial and residential end users, and consumer products that use energy.

# FINANCIAL REQUIREMENTS

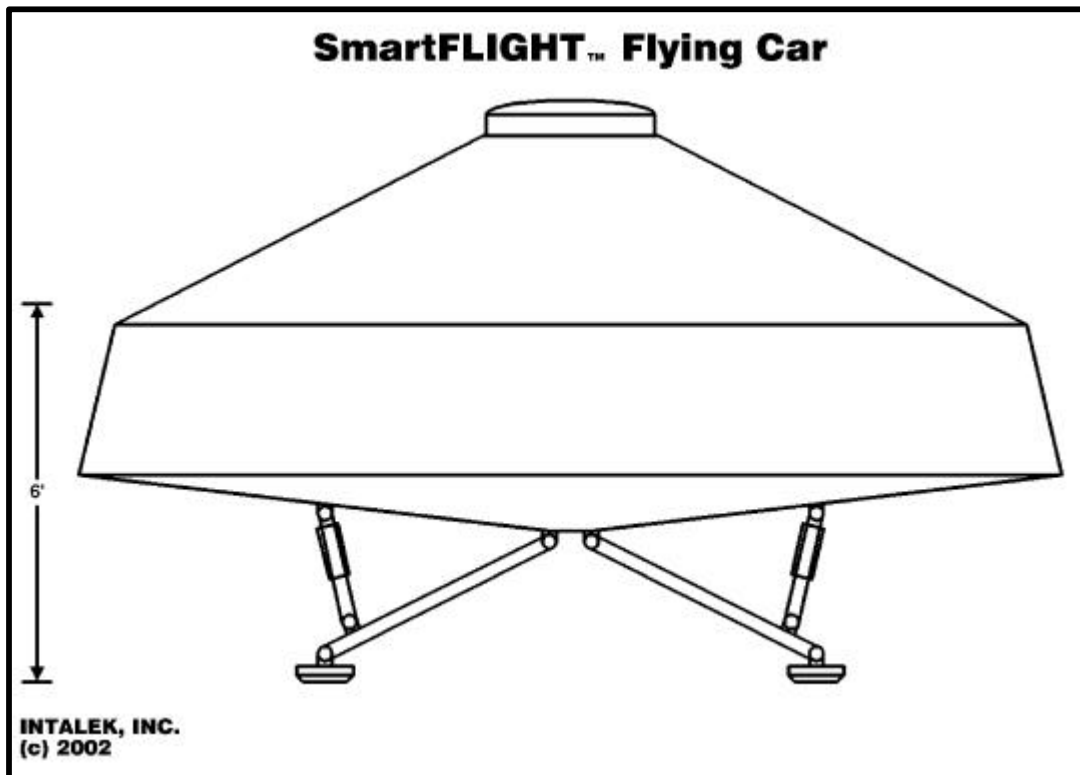
TARGET FUNDING: \$1,210,000 (This includes startup costs and three operating years.)					
STARTUP COST: \$150,000 (This includes equipment, materials, kickoff events, website, legal, and building lease.)					
	YEAR ONE	YEAR TWO	YEAR THREE	YEAR FOUR	YEAR FIVE
LICENSE SALES AND LIGHT MANU.					
INDUSTRY	50,000	100,000	200,000	400,000	800,000
COMMERCIAL AND RESIDENTIAL	0	0	50,000	100,000	200,000
CONSUMER	0	0	0	50,000	100,000
TOTAL SALES	50,000	100,000	250,000	550,000	1,100,000
OPERATING EXPENSES					
BUILDING LEASE					
OFFICE AND LAB SPACE	15,000	15,000	30,000	30,000	30,000
SALARIES	100,000	100,000	200,000	200,000	200,000
UTILITIES/PHONE/ISP	15,000	15,000	20,000	20,000	20,000
LAB AND OFFICE EQUIPMENT	50,000	50,000	25,000	25,000	25,000
PROTOTYPES AND PARTS	25,000	25,000	25,000	25,000	25,000
COMPUTING EQUIPMENT					
HARDWARE & SOFTWARE	25,000	10,000	10,000	10,000	10,000
TRADESHOWS AND ADVERTISE	15,000	15,000	15,000	15,000	15,000
TECH CONSULTING SERVICES					
MACHINIST, TECHNICIAN	50,000	50,000	50,000	50,000	50,000
CONSULTING SERVICES					
OFFICE, LEGAL, ACCOUNT	50,000	50,000	50,000	50,000	50,000
TOTAL OPERATING EXPENSES	330,000	315,000	410,000	410,000	410,000
REVENUE	0	0	0	140,000	690,000
EMPLOYEES					
PRINCIPAL	1	1	1	1	1
ENGINEER	0	0	1	1	1
OFFICE	0	0	1	1	1

## OTHER RESEARCH PROJECTS INCLUDE THE SmartMEG™:



The theory of operation of the SmartMEG is based upon a magnetic anomaly that exists when gating magnet flux through transformer core material. The SmartMEG system uniquely converts this excess flux into electrical energy, and switches it into an external load for immediate use.

# AND SmartFLIGHT™ TECHNOLOGY:



INTALEK's SmartFLIGHT(tm) and Jim Cox's Inerticraft will be the world's first "flying car" using Gravito-Propulsion (GP) technology. Jim Cox of ANTIGRAVITY NEWS AND SPACE DRIVE TECHNOLOGY bases this incredible and astounding technology on his latest research.

The objective is to develop a "car" capable of vertical lift, and with the application of "fly-by-wire" technology, adroitly control the lift to provide lateral motion. Once developed, the car will compete for the \$10,000,000 award of the X-PRIZE contest.

The GP technology will be powered by INTALEK's SmartPAK(tm) / SmartMEG(tm) FREE ENERGY / OVER-UNITY technology, and will be a completely self-powered and self-contained machine.