

Application Guide for SmartPAK™ Controllers

VERSION 3.0

INTALEK, INC.

3506-43rd. Place
Highland, IN
46322

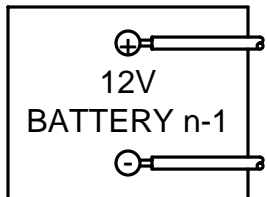
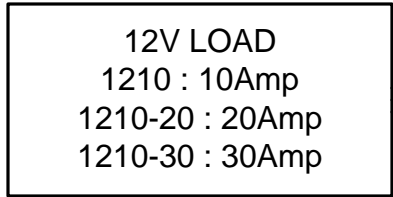
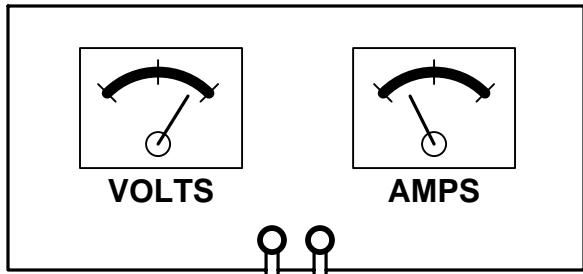
CONTACT INFO:

PHONE: 219.924.2742

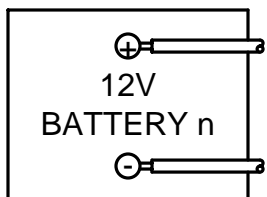
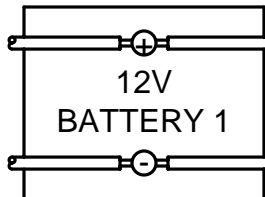
EMAIL: infobox01@intalek.com

Disclaimer: The author assumes no liability for any incidental, consequential or other liability from the use of this information. All risks and damages, incidental or otherwise, arising from the use or misuse of the information contained herein are entirely the responsibility of the user. The author assumes no responsibility for any omissions or errors in the diagrams or measurement data published in this document.

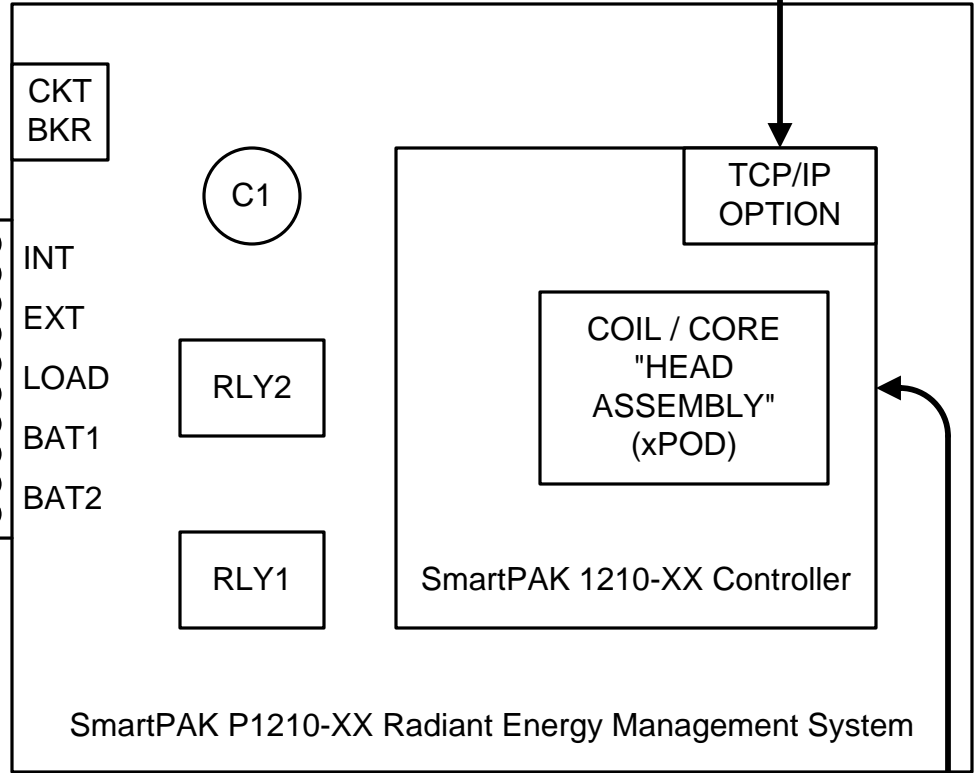
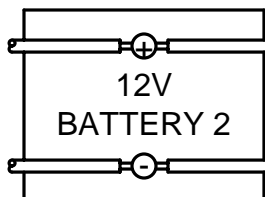
The diagrams published are currently, or have been under test by the author, and may be subject to modification after they have been published in this document.



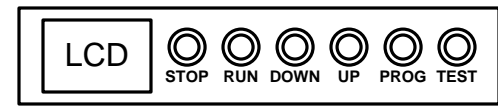
...



...



LAN WEB ACCESS



SmartPAK/xPOD P1210-XX System: Wired in External-Powered Mode

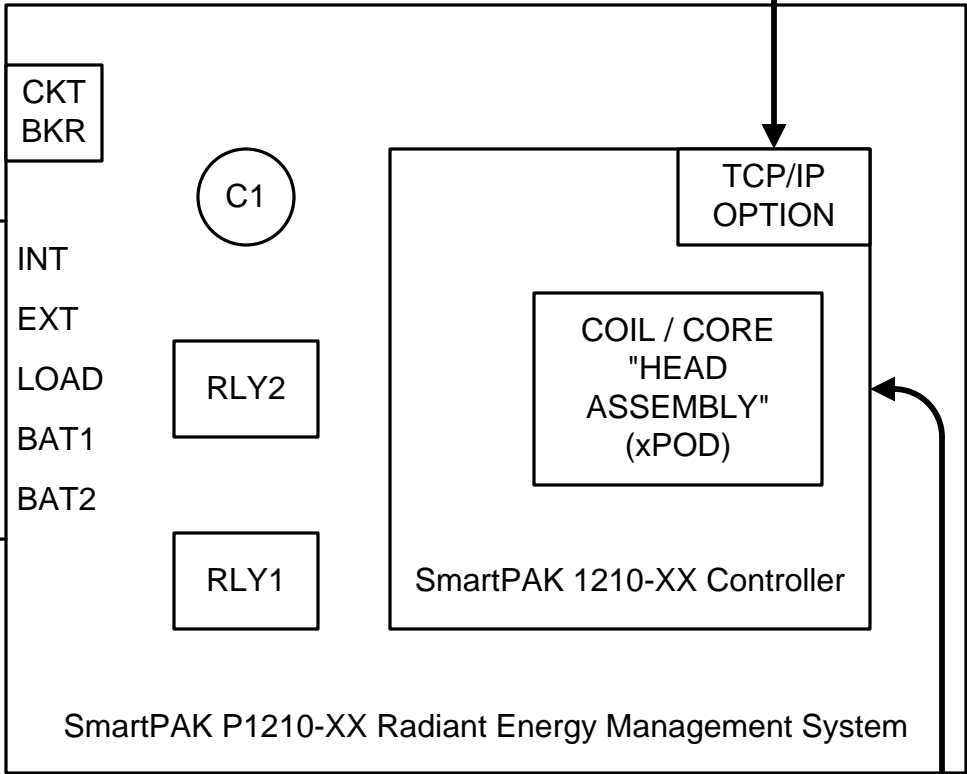
12V LOAD
 1210 : 10Amp
 1210-20 : 20Amp
 1210-30 : 30Amp

12V
 BATTERY n-1

12V
 BATTERY 1

12V
 BATTERY n

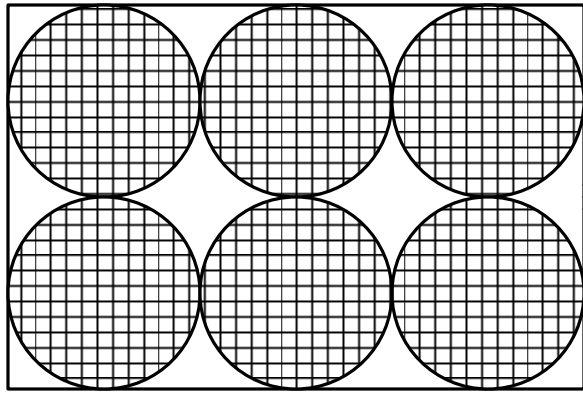
12V
 BATTERY 2



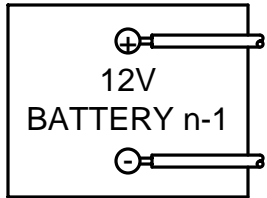
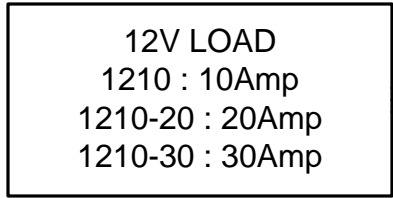
LCD

STOP RUN DOWN UP PROG TEST

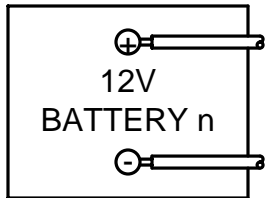
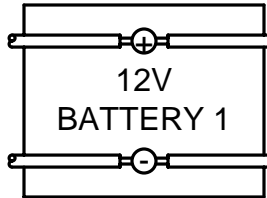
SmartPAK/xPOD P1210-XX System: Wired in Self-Powered Mode



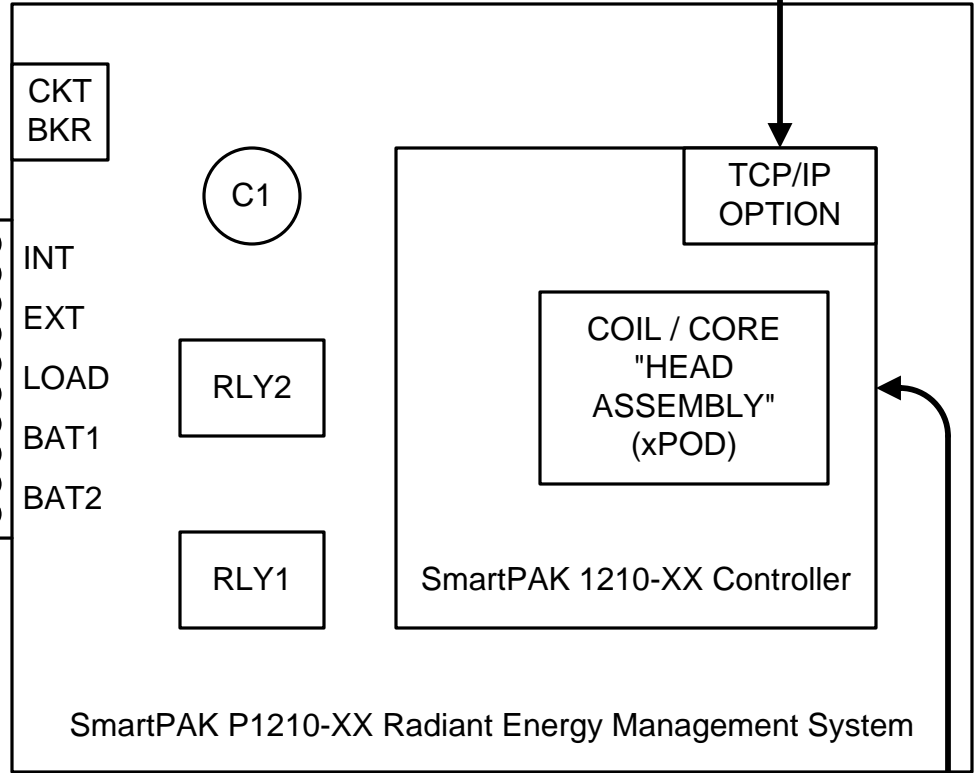
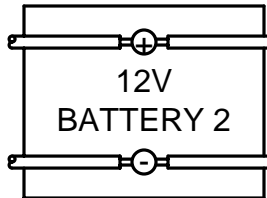
SOLAR CELL
MODULE
11V to 21V



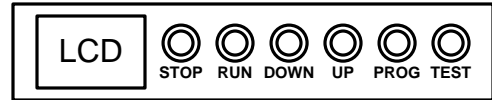
...



...



LAN WEB ACCESS



SmartPAK/xPOD P1210-XX System: Wired in Solar-Powered Mode

12V LOAD
 1210A : 10Amp
 1210A-20 : 20Amp
 1210A-30 : 30Amp

C1, 2500f

C2, 2500f

C3, 2500f

C4, 2500f

C5, 2500f

C6, 2500f

C7, 2500f

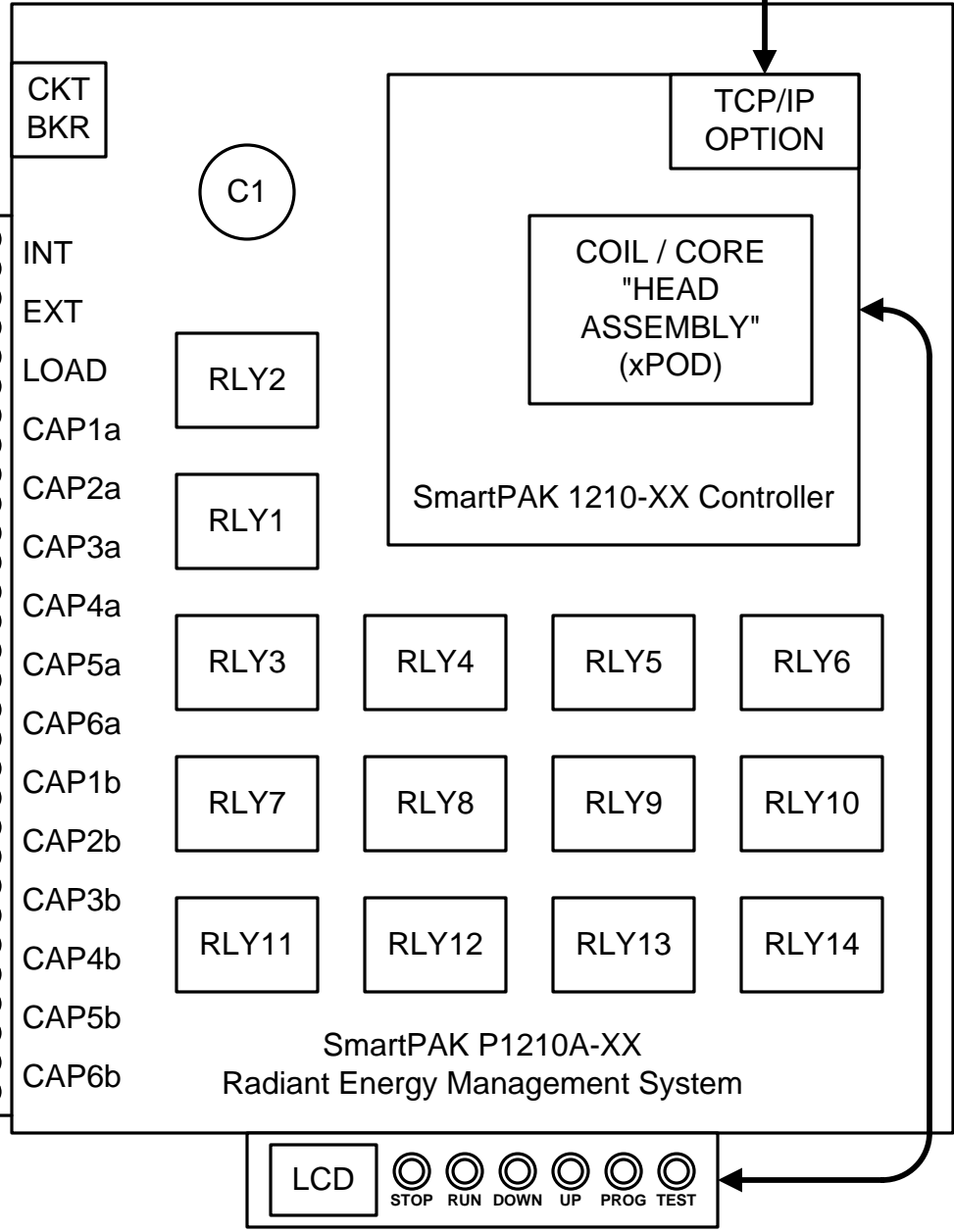
C8, 2500f

C9, 2500f

C10, 2500f

C11, 2500f

C12, 2500f



SmartPAK/xPOD P1210A-XX System: Wired in Self-Powered Mode

24V LOAD
 2410 : 10Amp
 2410-20 : 20Amp
 2410-30 : 30Amp

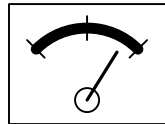
12V BAT 1

12V BAT 2

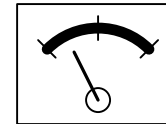
12V BAT 3

12V BAT 6

DC BENCH
 POWER SUPPLY
 21V to 42V

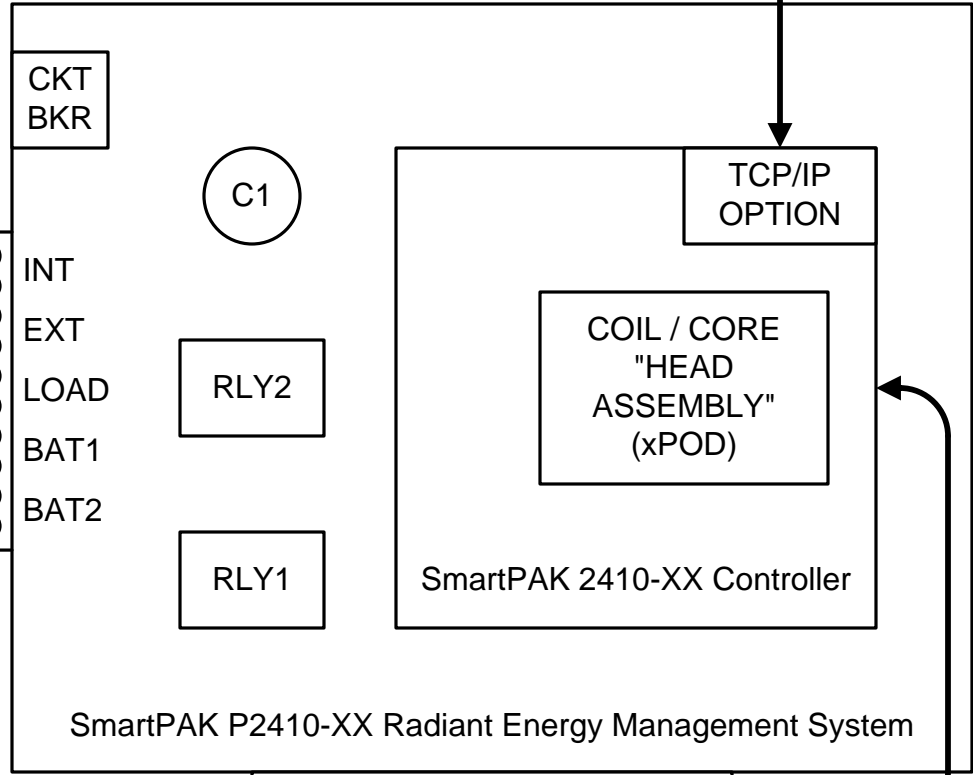


VOLTS



AMPS

LAN
 WEB
 ACCESS



SmartPAK P2410-XX Radiant Energy Management System



SmartPAK/xPOD P2410-XX System: Wired in External-Powered Mode

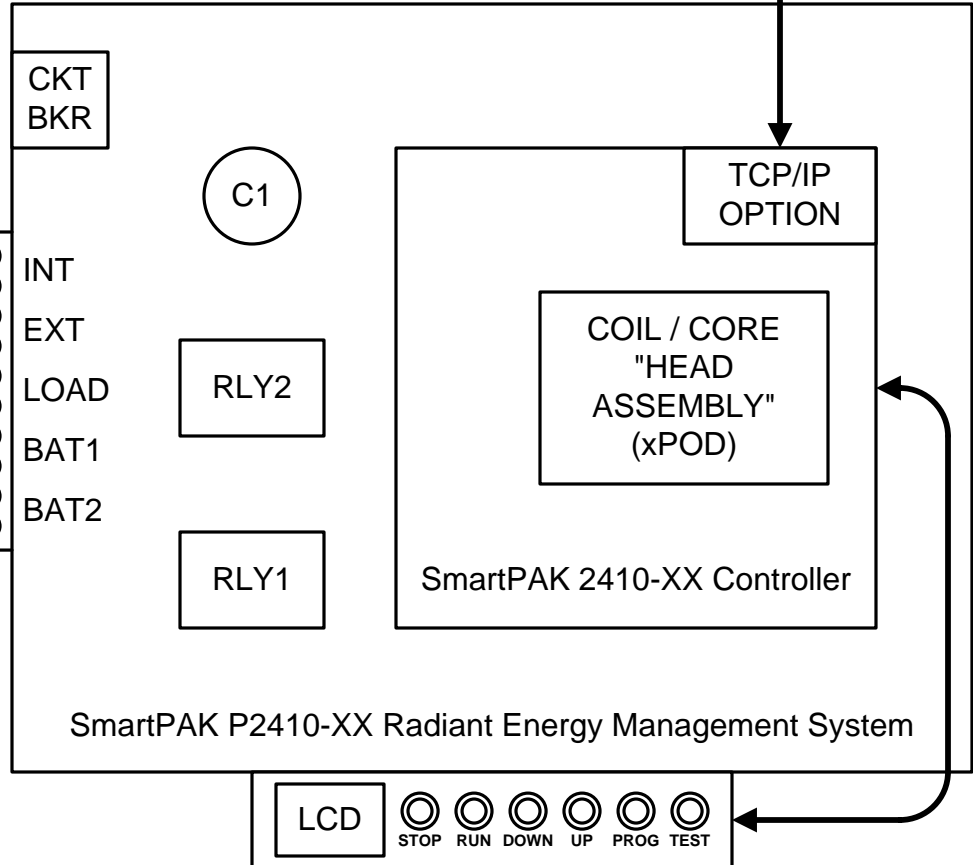
24V LOAD
2410 : 10Amp
2410-20 : 20Amp
2410-30 : 30Amp

12V BAT 1

12V BAT 2

12V BAT 3

12V BAT 6



SmartPAK/xPOD P2410-XX System: Wired in Self-Powered Mode

36V LOAD
 3610 : 10Amp
 3610-20 : 20Amp
 3610-30 : 30Amp

12V BAT 1

12V BAT 2

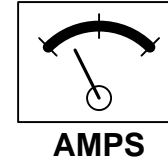
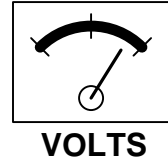
12V BAT 3

12V BAT 4

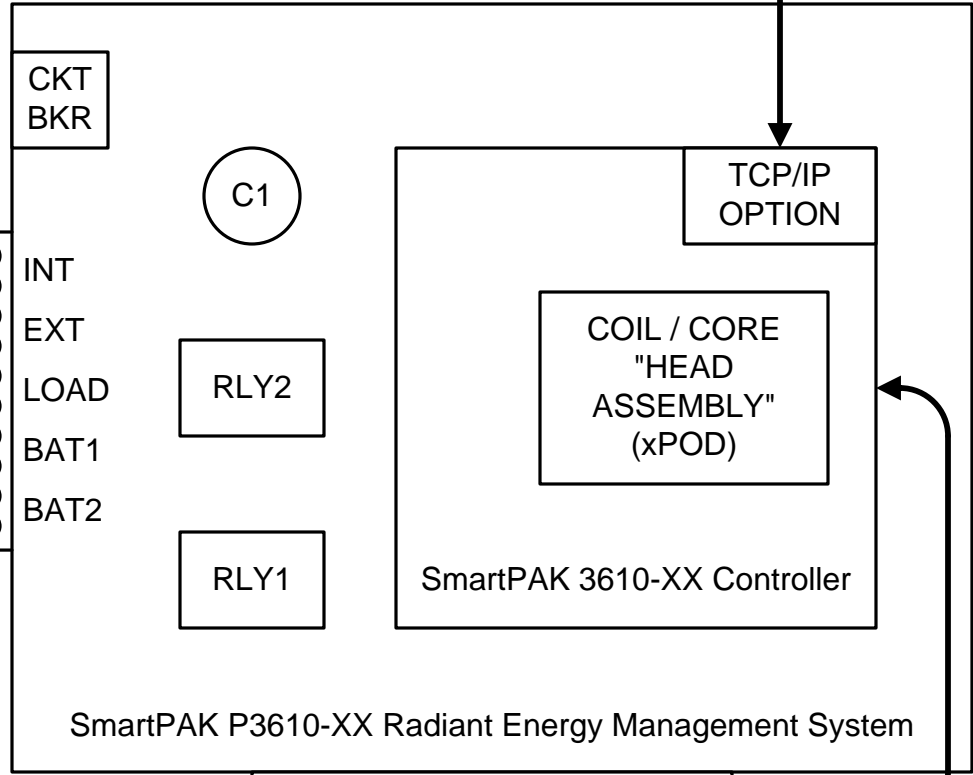
12V BAT 5

12V BAT 6

DC BENCH
 POWER SUPPLY
 21V to 42V



LAN
 WEB
 ACCESS



LCD

STOP

RUN

DOWN

UP

PROG

TEST

SmartPAK/xPOD P3610-XX System: Wired in External-Powered Mode

36V LOAD
3610 : 10Amp
3610-20 : 20Amp
3610-30 : 30Amp

12V BAT 1

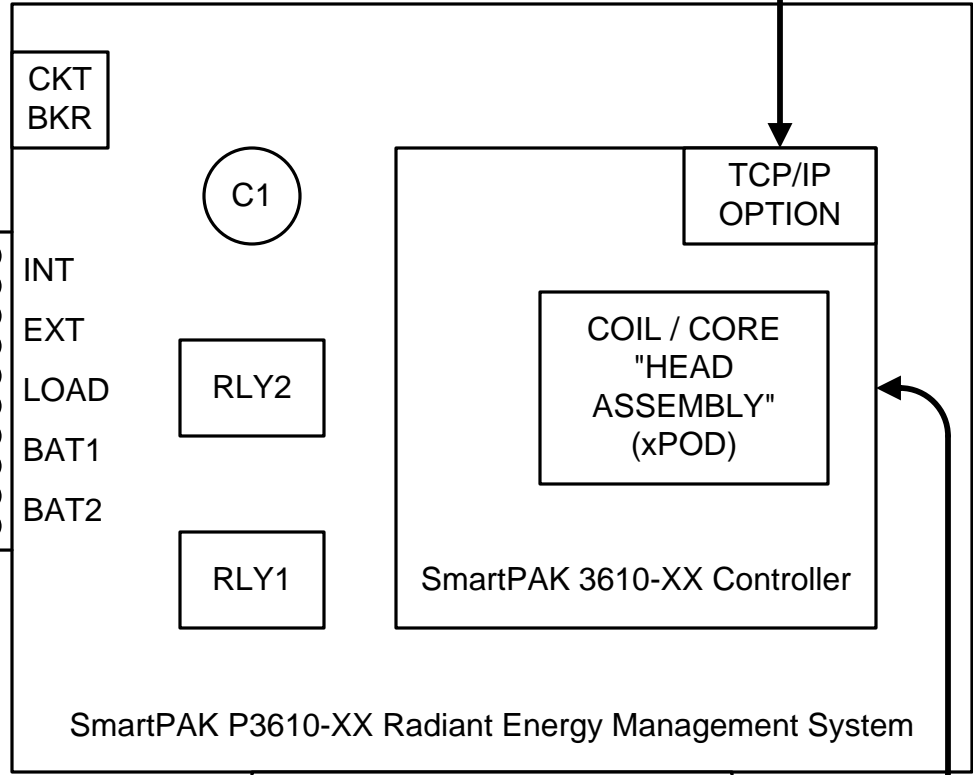
12V BAT 2

12V BAT 3

12V BAT 4

12V BAT 5

12V BAT 6



LAN
WEB
ACCESS

LCD ○ ○ ○ ○ ○ ○
STOP RUN DOWN UP PROG TEST

SmartPAK/xPOD P3610-XX System: Wired in Self-Powered Mode

36V LOAD
3610 : 10Amp
3610-20 : 20Amp
3610-30 : 30Amp

12V BAT 1

12V BAT 2

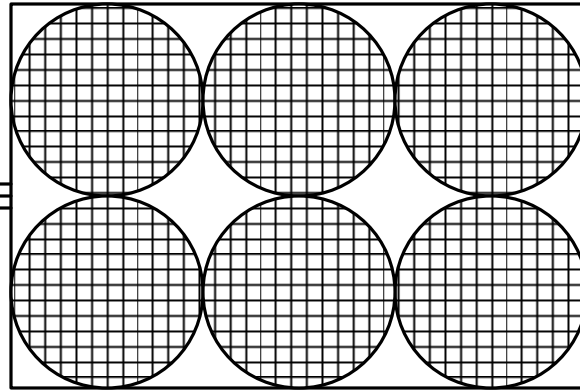
12V BAT 3

12V BAT 4

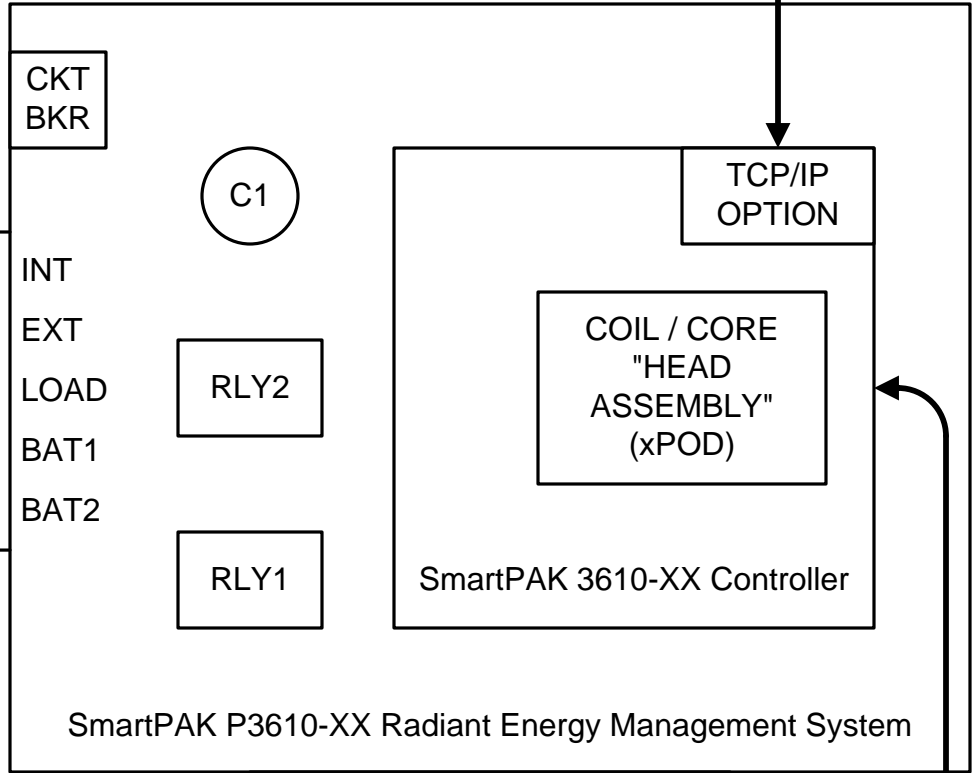
12V BAT 5

12V BAT 6

SOLAR CELL
MODULE
21V to 42V



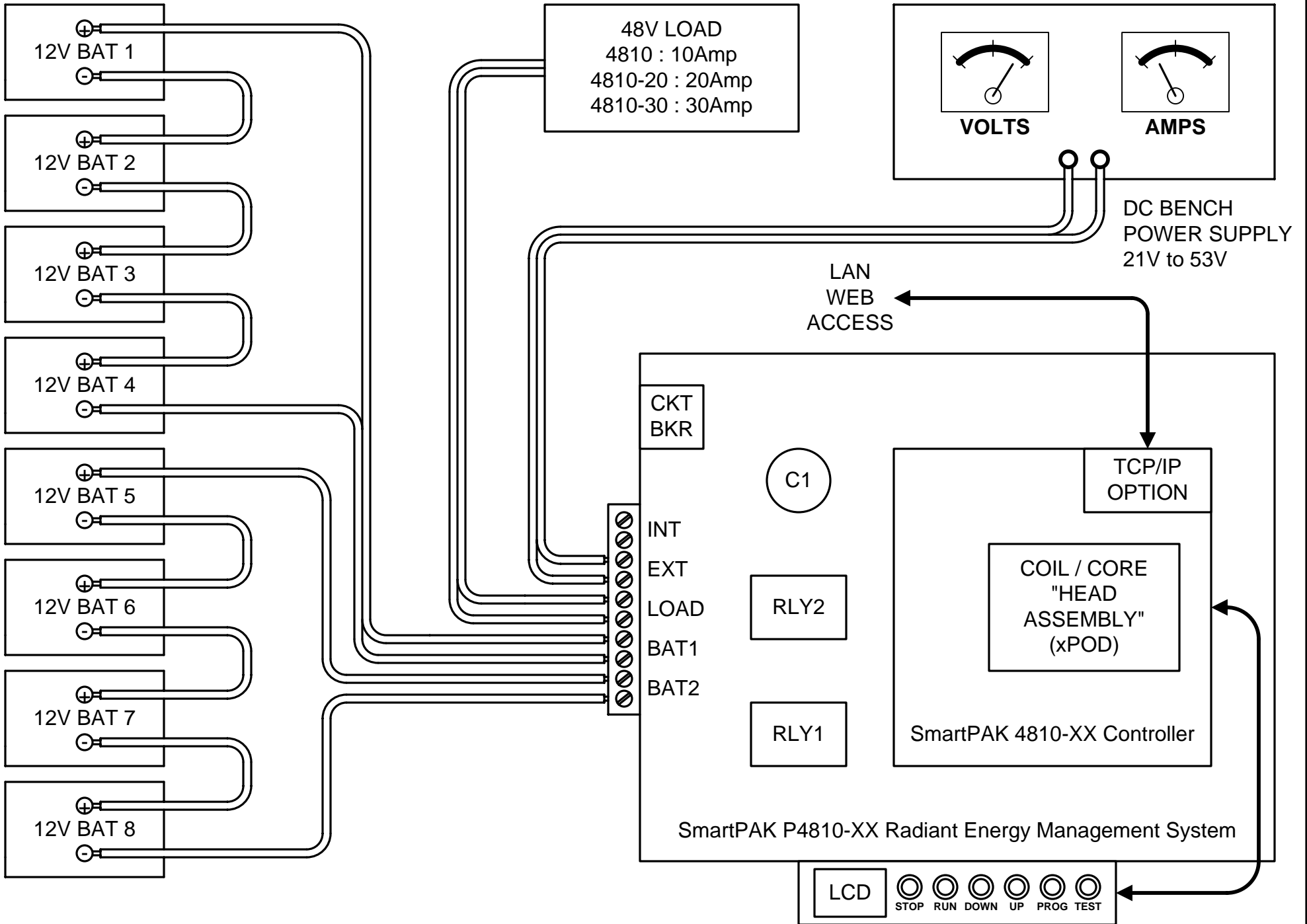
LAN
WEB
ACCESS



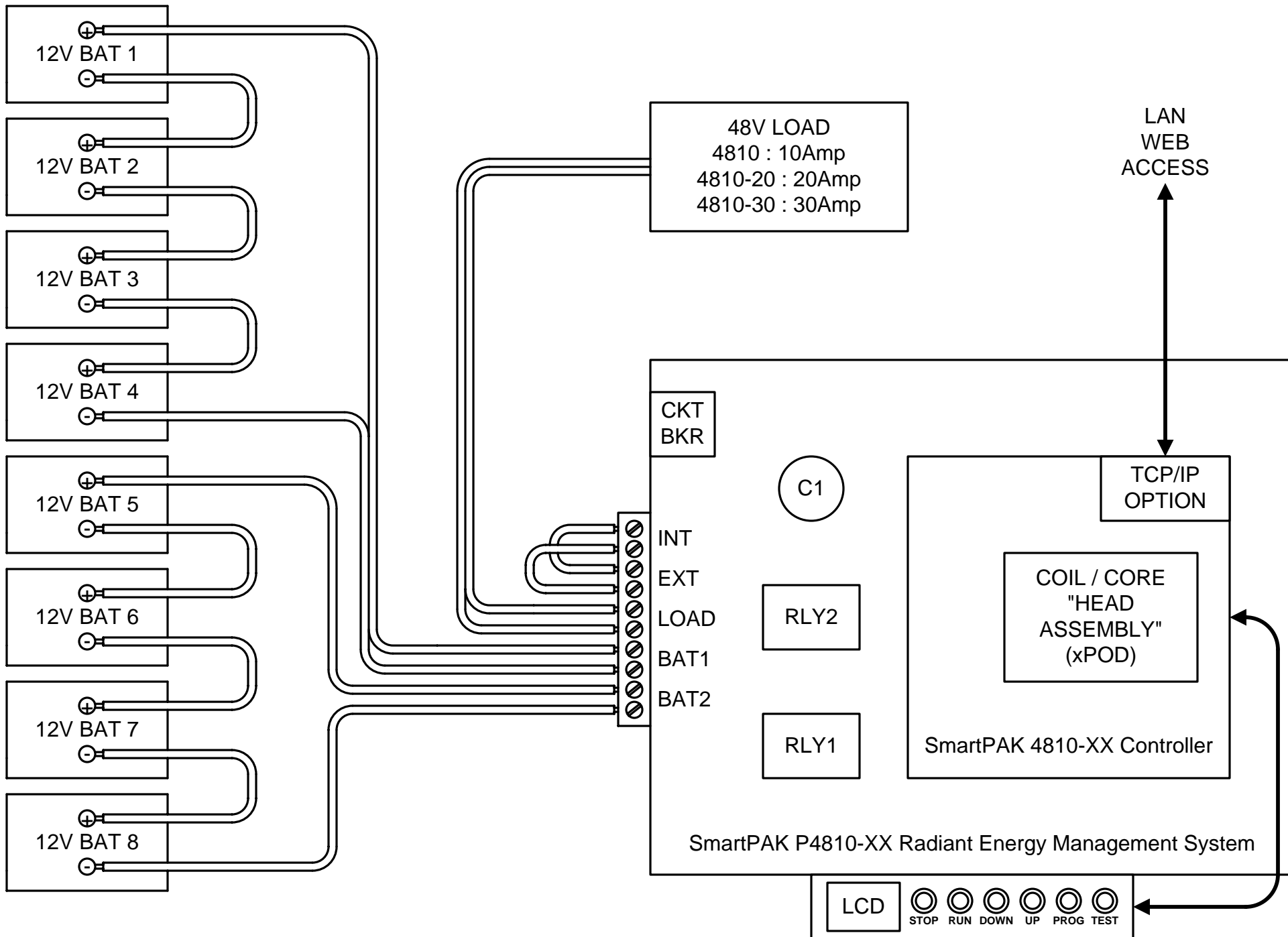
SmartPAK P3610-XX Radiant Energy Management System

LCD ○ ○ ○ ○ ○ ○
STOP RUN DOWN UP PROG TEST

SmartPAK/xPOD P3610-XX System: Wired in Solar-Powered Mode



SmartPAK/xPOD P4810-XX System: Wired in External-Powered Mode



SmartPAK/xPOD P4810-XX System: Wired in Self-Powered Mode